



MOE Budget 2021-2022

Alameda County District Attorney's Office

Nancy E. O'Malley,
District Attorney



Mission Statement

Uphold Alameda County as a safe and livable community through the fair and effective administration of justice; compassionate and committed support of crime victims; innovative programs that provide opportunities for rehabilitation and reintegration; and programs designed to enhance the lives of vulnerable populations, children and youth for a bright, healthy future.

Values

Truth - Always pursue the truth.

Justice - Demonstrate commitment to fair and equitable justice for all.

Integrity - Uphold the public trust and operate with the highest integrity.

Courage - Have the courage to do what is right.

Innovation - Value innovative thought and programs that improve outcomes for the community.

Collaboration - Work collaboratively with the public safety partners, community-based organizations and the community at large to achieve justice.

Communication - Value and practice open, transparent communication.

Respect - Acknowledge and hear diverse views and respect all persons.

Civility - Treat all persons with civility.

Diversity - Value the rich diversity of Alameda County and ensure that it is reflected in the women and men who serve in the Alameda County District Attorney's Office.

District Attorney

Financial Summary

District Attorney	2020-21 Approved Budget	2021-22 Maintenance of Effort Budget	Change from 2020-21 Approved	
			Amount	Percentage
Appropriations	\$89,169,396	\$93,857,965	\$4,688,569	5.26%
Revenue	\$17,907,016 (includes \$3.2M VBB)	\$18,291,480	\$384,464	2.15%
Net County Cost	\$71,262,380	\$75,566,485	\$4,304,105	6.04%
FTE - Mgmt	245.66	249.16	3.50	1.42%
FTE – Non-Mgmt	87.88	93.88	6.00	6.83%
Total FTE	333.54	343.04	9.50	2.85%



District Attorney

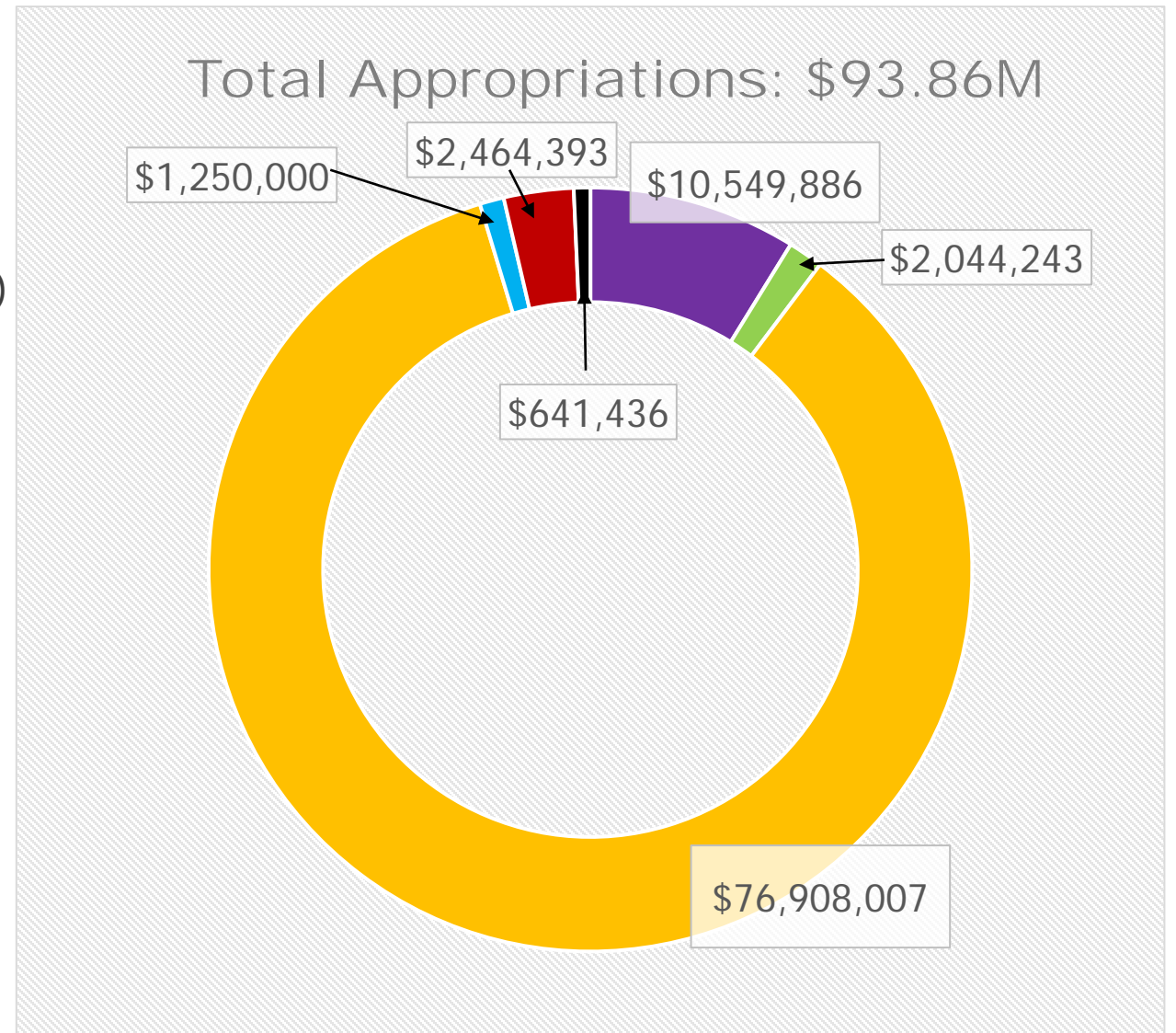
Major Components of Net County Cost (NCC) Change (in millions)

Component	NCC Change
Salary and Employee Benefits	\$7.05
<i>• Major Drivers – Salaries & Benefits</i>	
Internal Adjustments	(\$2.96)
<i>• Major Drivers - Adjustments to BMD Space Rental , Information Technology, & Vehicles</i>	
<i>• Major Drivers - Increases to Intra-Fund Transfers</i>	
Discretionary Services & Supplies	\$0.59
<i>• Major Drivers - Increases in Services & Supplies</i>	
Total Revenue adjustment	(\$0.38)
<i>• Major Drivers – Revenue increased</i>	
TOTAL NCC Change	\$4.3



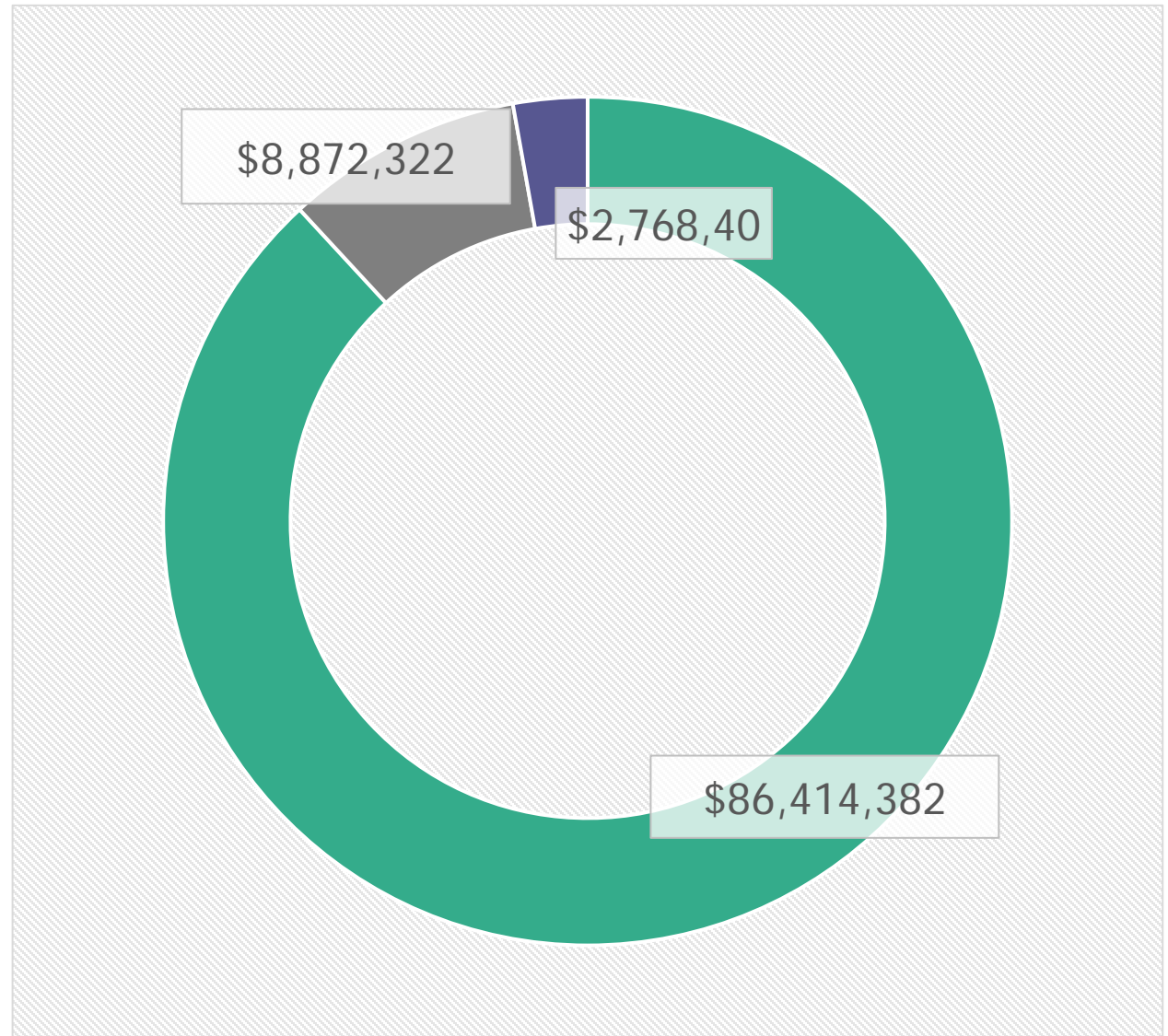
Appropriation by Department

- District Attorney Grants: \$10,549,886 (11.24%)
- Realignment: \$1,250,000 (1.33%)
- District Attorney: \$76,908,007 (81.94%)
- Public Assistance Fraud: \$2,044,243 (2.18%)
- Family Justice Center: \$2,464,393 (2.63%)
- Grand Jury: \$641,436 (0.68%)



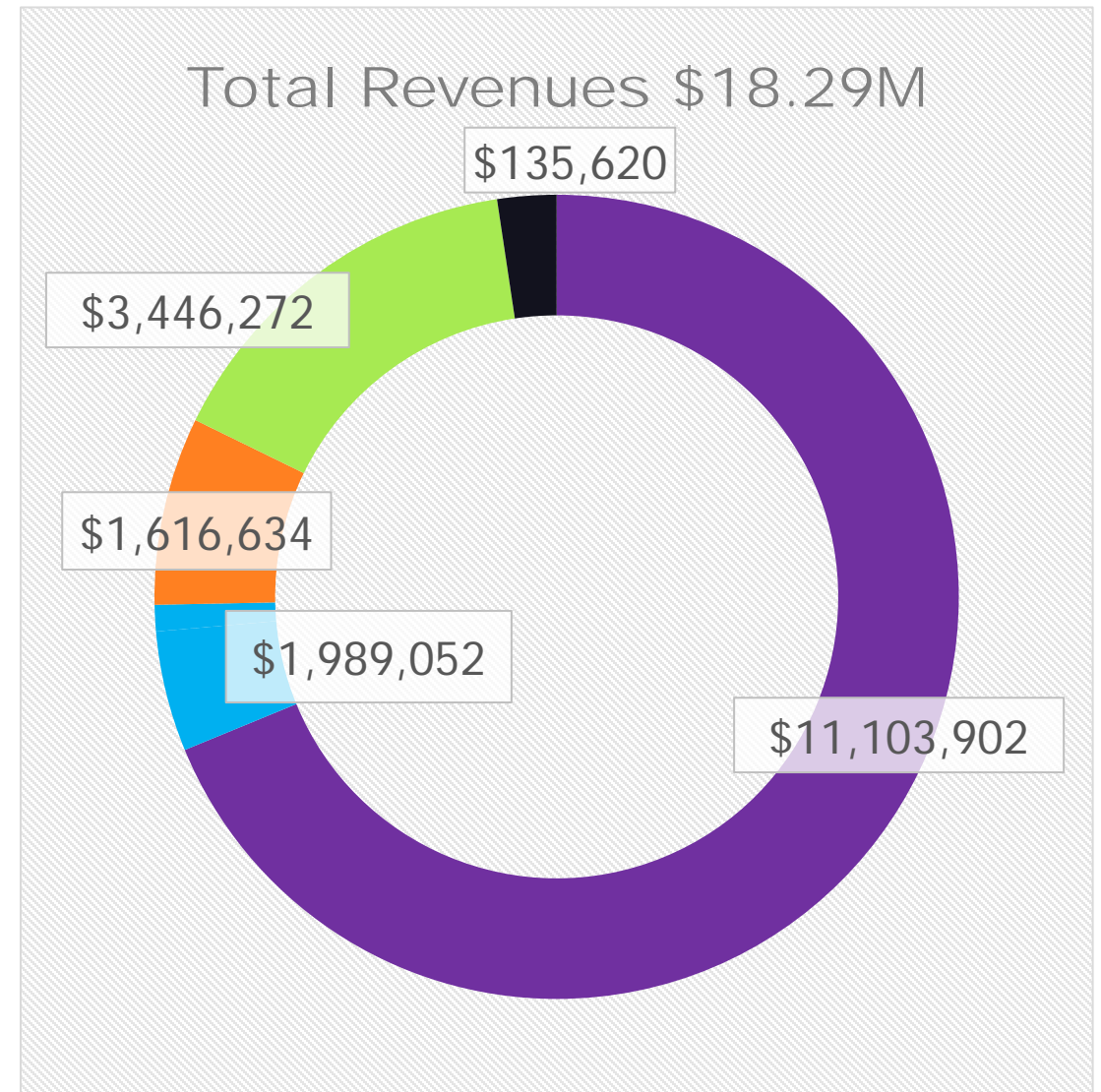
Total Appropriation by Major Object

Salaries & Employee Benefits	\$86,414,382	88.13%
County Provided Services & Supplies Non Discretionary	\$8,872,322	9.05%
Services & Supplies Discretionary	\$2,768,403	2.82%
Intra Fund Transfers	-\$4,197,142	



Total Revenue by Source

- State Aid: \$11,103,902 (60.71%)
- Federal Aid: \$1,989,052 (10.87%)
- Use of Money & Property: \$135,620 (0.74%)
- License Fees: \$1,616,634 (8.84%)
- Other Revenue: \$3,446,272 (18.84%)



Crime Free County 2026

Implement robust criminal justice strategies that lead to a crime free county through responsive and innovative community engagement while providing effective support for victims and reentry populations.

Alameda County VISION 2026



No winter lasts forever No spring skips its turn



Thriving and Resilient Populations



Safe and Liveable Communities

Healthy Environment
Ensure geographic based access
to the justice system services



Community Safety

Provide equitable and effective
crime reduction strategies

Building a System that lifts
up and gives mindful focus
on Diversity, Equity and
Inclusion

Creation of the Alameda County
District Attorney

Division of Diversity,
Equity and Inclusion

which is
Internal and External Focused



Safe and Liveable Community

- Expand Outreach and Engagement to Ensure that Victims of Crime are treated with Respect, Dignity, Empathy and Emotional Support
 - Alameda County Family Justice Center
 - Certified Trauma Recovery Center
 - Victim-Witness Assistance Program
 - Victims of Crime Assistance
 - Increased Resources for Family Burials
 - Increased Access to Medical and Mental Health Care
 - Restitution

f | | | Español 中文版 | Search | Go

Alameda County FAMILY JUSTICE CENTER

SAFETY ALERT!
Abusers can track your computer activity. If you are in danger, please call 911 or the National Domestic Violence Hotline (1-800-799-SAFE). And consider using a safer computer such as one from the library or a friend's house.

ESCAPE this site

HOME ABOUT US NEWS & EVENTS YOUTH SERVICES PARTNERS RESOURCE LIBRARY DONATE

Please be safe

If you are a victim of crime, PLEASE LET US HELP YOU
Download flyers with contact information available in several languages

GET HELP

Please be safe. If you are a victim of crime, please let us help you.

If you need help, call or email:

- Hate Crime Hotline (510) 208-4824
- Alameda County District Attorney's Office (510) 272-6222
- Victim Witness Assistance Division (510) 272-6180
- Family Justice Center (510) 267-8800

Download flyers in:
[English](#) | [Spanish](#) | [Chinese](#) | [Farsi](#) | [Vietnamese](#)

Text-To-911 Now Available for OPD

The Oakland Police Department is pleased to announce that community members can now use Text-to-911.

Starting, December 31, 2020, Text-to-911 will be an additional safe and reliable resource for residents to contact the Oakland Police Department in an emergency.





Safe and Liveable Community

Specialize Prosecution & Other Units

- Sexual Assault and Child Sexual Abuse Unit
- Domestic Violence and Stalking Unit
- Elder and Dependent Adult Unit
- Human Exploitation And Trafficking Unit
- Mental Health Unit
- Hate Crime Unit
- Special Prosecution Unit
- Outreach and Education Unit
- DNA Cold Case Unit
- Consumer Protection Unit
- Illegal Dumping Task Force
- Environmental Protection Unit
- Consumer Protection Unit
- Insurance Fraud



Safe and Liveable Communities



- **Justice Restoration Project (ACJRP):** Provides intensive, individualized peer coaching for persons aged 18-34, who have non-serious felony conviction(s) in their history, and have committed a new realigned felony.
- **Early Intervention Court (EIC):** Serves non-violent offenders charged with 1170(h) offenses – primarily theft, property crimes and drug sales.
- **Pacific Educational Services (PES) Misdemeanor Pre-Charging Diversion:** Pre-charging alternative that diverts individuals away from the criminal justice system in favor of an education-based program.
- **Veterans Treatment Court:** Serves Veterans suffering from psychological trauma and/or substance abuse related to their service.
- **Mentor Diversion Court:** Diverts persons aged 18-25 who are charged with drug sales.
- **Behavioral Health Court:** Serves persons with a diagnosed Axis 1 mental disorder who are charged with non-strike crimes.

Alternatives to Incarceration: Collaborative Courts and Programs

Our investment, our goal, is to help individuals find a path of success

The District Attorney supports and staffs 10 collaborative courts and programs



Safe and Liveable Communities



- **Drug Court:** Secures intense substance abuse treatment for “high risk, high needs” persons charged with drug-related offenses.
- **Re-entry Court:** Provides increased support for reintegration into the community for felons active to parole or PRCS who are at high/moderate risk to recidivate or violate their supervision terms.
- **DIL:** Hosting Peer Support Specialist Certification Training to those with Lived Experience can help and support other justice involved individuals
- **Homeless and Caring Court:** Community court serving formerly homeless individuals by dismissing tickets, fines, and court fees from previous traffic offenses and non-violent misdemeanor convictions.
- **Transitional Age Youth (TAY)** Per PC 1000.7, serves young men, aged 18-20, diverted with a deferred entry of judgment on a first felony.
- **Clean Slate:** Created in 2002, the D.A. partnered with the Superior Court and the East Bay Community Law Center to reduce and expunge 300 criminal convictions in a single-day event at Laney College.

Alternatives to Incarceration: Collaborative Courts and Programs

Our investment, our goal, is to help individuals find a path of success

The District Attorney supports and staffs 10 collaborative courts and programs





Safe and Liveable Community

Please be safe

If someone hurts or threatens you, call 9-1-1

If you are a victim of crime, PLEASE LET US HELP YOU

If you need help, call or email

• Hate Crime Hotline (510) 208-4824 •
Alameda County District Attorney's Office
(510) 272-6222 • info@alccoda.org

Alameda County
Victim Witness Assistance Division
(510) 272-6180 • Askvw-da@acgov.org

Alameda County Family Justice Center
(510) 267-8800 • info@acfjc.org



Alameda County District Attorney's Office
Nancy E. O'Malley, District Attorney

請注意安全!

如您受到傷害或威脅, 請電 9-1-1

如您是罪案的受害者, 讓我們為您提供協助

如您有困難需要幫助, 可致電或發送電子郵件到以下部門

• 仇恨犯罪熱線 (510) 208-4824 •

阿拉米達縣地檢署
(510) 272-6222 • info@alccoda.org

阿拉米達縣受害人及證人援助部
(510) 272-6180 • Askvw-da@acgov.org

阿拉米達縣家庭司法中心
(510) 267-8800 • info@acfjc.org



亞拉米達縣地檢署 地檢官蘭茜奧瑪莉

HELP US STOP HATE CRIME

There is no place in Alameda County for hate motivated conduct or hate driven words based on race, gender, religion, nationality, sexual orientation, or gender identity.



Everyone, regardless of status, has the right to be safe and protected!

"The District Attorney's Office will treat every individual in this county with the care, respect and dignity that each of us deserves and expects."
- DA Nancy O'Malley.

STOP HATE CRIME BY CALLING OUR HOTLINE AT: 510-208-4824

STOP HUMAN TRAFFICKING BY CALLING: 510-208-4959

STOP FRAUD BY CALLING: 510-383-8600



NATIONAL CHILD ABUSE PREVENTION MONTH Strong and Thriving Families

REQUIRED FOR ENTRY Everyone Must Wear a Face Covering

Covering your face is now mandatory to help prevent the spread of COVID-19



Please keep 6 ft. apart Stay home if you're sick Wash your hands often



Pursuant to the Order of the Alameda County Health Officer



Diversity of people, perspectives



Inclusion: power, voice, organizational culture



Equity = results from policy, practice, position



Emergency call or text 9-1-1

HEAR. SEE. SUSPECT. REPORT.



Together We Can Stop



Child Abuse

RESOURCE LIST

- Alameda County Child & Family Services
24-Hour Child Abuse Hotline
(510) 259-1800
- District Attorney's Office
Victim Witness:
(510) 272-6180
- Human Trafficking Tip Line (for Children)
(510) 208 4959
- The Center for Child Protection
(510) 428-3742

Domestic Violence

RESOURCE LIST

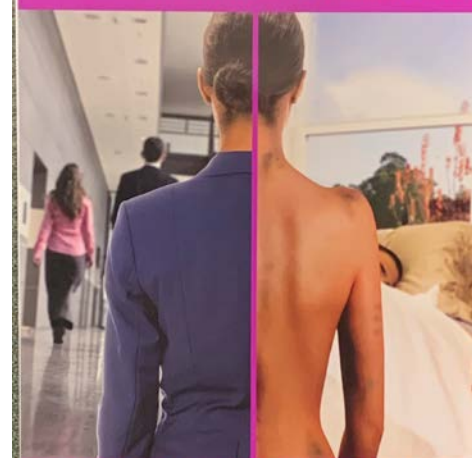
- Alameda County Family Justice Center
(510) 267-8800
- Adult Protective Services
Elder Abuse Hotline
(510) 577-3500
- Highland Hospital Sex Assault Response Team
24-Hour Crisis Line
(510) 534-9290
- Family Violence Law Center
Mobile Response Team
(800) 947-8301

Human Trafficking Tip Line - (510) 208 4959

National Human Trafficking Hotline
24-Hour Hotline 1 (888) 373-7888 or Text 233733

Tell a teacher. Tell a friend.
Direct Message Law Enforcement on-line via social media.

OCTOBER IS DOMESTIC VIOLENCE AWARENESS MONTH



DON'T COVER UP DOMESTIC VIOLENCE

SPEAKUP SPEAKOUT

You are not alone. Call (510) 267-8800 for help

THE ALAMEDA COUNTY DISTRICT ATTORNEY'S OFFICE & THE ALAMEDA COUNTY FAMILY JUSTICE CENTER

acfjc.org



Thriving and Resilient Populations

- We also participate in numerous community events where we hear community concerns that help us assess our performance to ensure that we are meeting the needs and expectations of our community.
- Due to COVID, we have pivoted to virtual
 - Posters letting community know help is available
 - Resource information in Food Bank Bags and in Grocery Stores
 - FB Live and Social Media presentations
 - Wellness Programs
 - Recognizing the signs of abuse



Community Engagement

Educate, support and engage community ...

unless we are Sheltered in Place





Thriving and Resilient Populations

- Youth Empowerment
- DA Justice Academy
 - 100 youth throughout the entire county
- Homework Helper
- Camp Hope
- Youth Internships
 - High School – College – Post College – Law School
- District Attorney Diversity Recruitment



HOPELESS PEOPLE

Human Impact of Funding Reduction

Effective programs with successful outcomes will be reduced or eliminated

Ability to uphold victims' rights and protections afforded by the criminal justice system will be negatively impacted

Options within public safety policies for victims and offenders that include options for a restorative justice model will be significantly reduced

Victim restitution and funded resource assistance will be diminished

Ability to provide victim services that are effective will be less accessible

People will become a victim of crime and a victim of the system that cannot serve them effectively



- Pending Federal Grant Applications with an Unknown Federal Budget Outcome
- State Budget Impacted by COVID-19
- Unknown Impacts to County Budget
- Foundation Grants on Hold
- Diminished Grant Funds Means Reduced Share Funding with CBOs
- Reduced Resources Strains Existing Operations and Services



Human Impacts of Funding Reductions

We will continue our efforts to assist individuals obtain relief from the negative consequences of victimization and of prior criminal justice system involvement.



- Potential reductions to funding from the Department of Insurance will have impact on staffing and revenue
- Potential reductions to State Grants funded through the Federal Victims of Crime Act (VOCA) could be as much as \$1 million
- VOCA funding reduction totaling \$600 million could impact victim services in Alameda County
- Recent state legislation and Initiatives impose additional mandates on District Attorneys' Offices without any additional resources or staffing



Community Based Partners Funded Through Grants

- 3 Strands Global Foundation
- Alameda Health System Highland Hospital
H.E.A.T. Response Program
- Annie Cannons
- Bay Area Women Against Rape
- Catholic Charities of the East Bay – Claire's House
- DeafHope
- Dream Catcher
- Dream Youth Clinic Roots Community Health Center
- Family Violence Law Center
- Fred Finch Youth & Family Services
- International Action Network for Gender Equality & Law (IANGEL)
- International Institute of the Bay Area
- Nola Brantley Speaks
- Ruby's Place
- Safe Alternatives to Violent Environments
- Survivors Healing, Advising, & Dedicated to Empowerment (SHADE)
- Tri-Valley Haven
- UCSF Benioff Children's Hospital Oakland (BCHO)
- WestCoast Children's Clinic
- WestEd
- Youth Alive
- Jewish Family and Children Services
- Justice at Last
- La Familia
- Lincoln Families
- MISSEY



Significant Cost Saving Efforts

- Utilize furniture and equipment from Property and Salvage, with a cost savings in excess of \$500,000
- Eliminate outside service for transcription services resulting in an annual savings in excess of \$150,000
- Increase the number of grant applications, received new grant multi year awards in excess of \$3.6 Million
- Explore implementing ePayments from ITD for processing payments for Discovery and Records Requests
- Work with GSA to eliminate the Non Labor Overhead charges for unoccupied buildings





**Alameda County District
Attorney's Office**

Thank
You

Nancy E. O'Malley

District Attorney